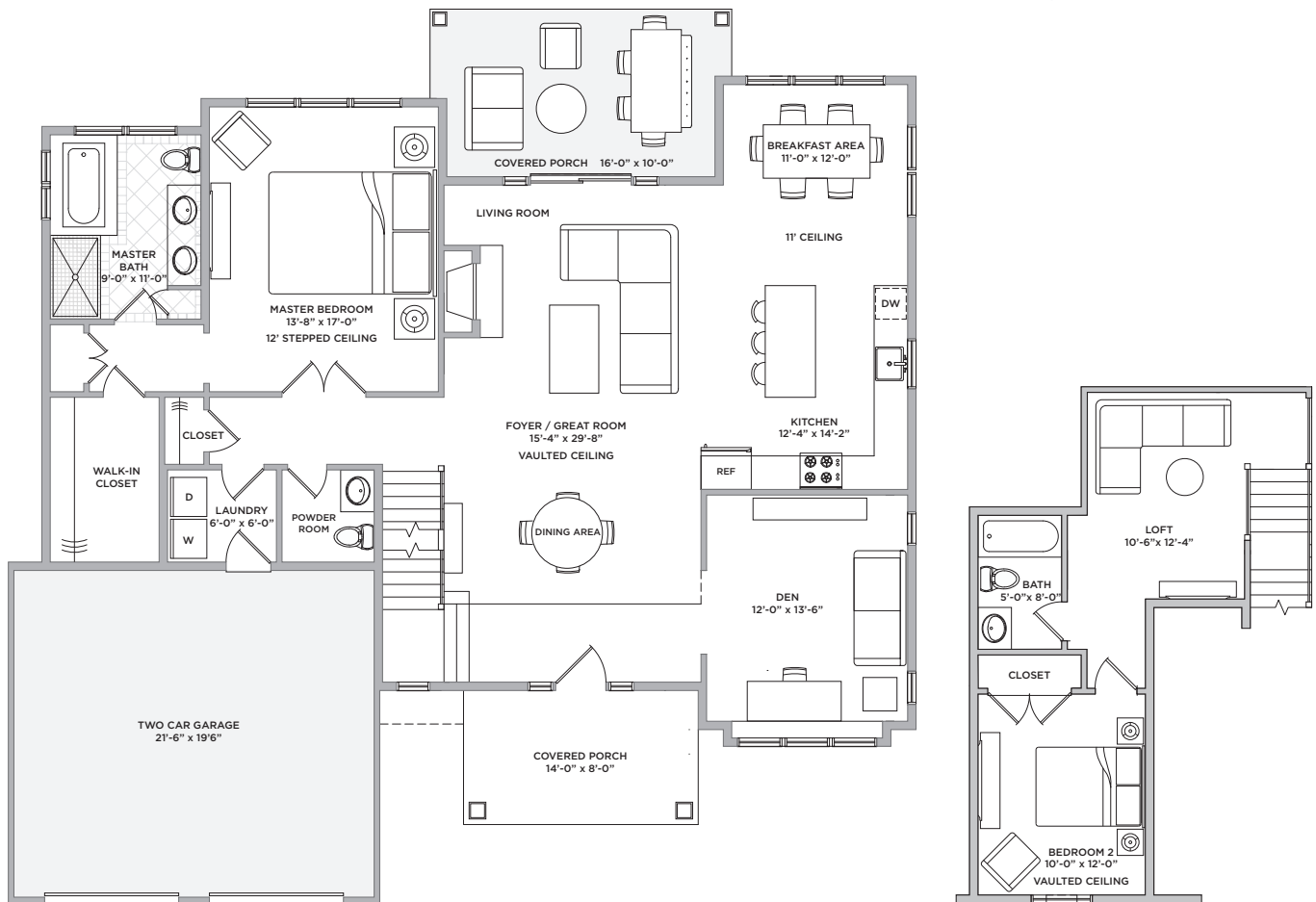


2 BEDROOMS • DEN • LOFT • 2.5 BATHS • 2-CAR GARAGE • FULL BASEMENT

2,000 SQ FEET



2ND FLOOR BEDROOM  
AND LOFT

**YOUR RESIDENCE ALSO INCLUDES:**

GARAGE - 419 SF | BASEMENT - 1,659 SF | FRONT PORCH - 112 SF | REAR PORCH - 160 SF

All dimensions are approximate

Griffing Street/Schoolhouse Road • Cutchogue, NY 11935 • 631.735.9300 • harvest-pointe.com

The complete terms are in an Offering Plan available from Sponsor. File No. CD17-0155. All photos are lifestyle photos or amenities in the area. All clubhouse and residence images are artist's renderings.

