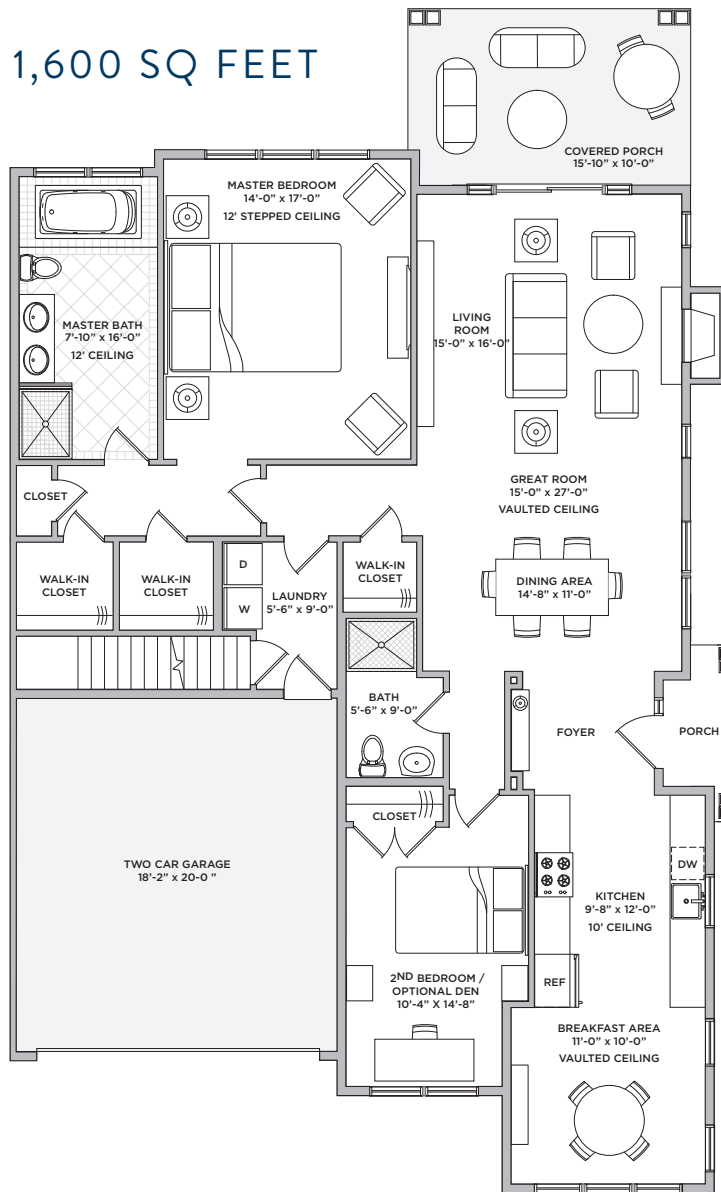


2 BEDROOMS • 2 BATHS • 2-CAR GARAGE • FULL BASEMENT



**YOUR RESIDENCE ALSO INCLUDES:**

GARAGE - 364 SF | BASEMENT - 1,599 SF | FRONT PORCH - 32 SF | REAR PORCH - 160 SF

All dimensions are approximate

Griffing Street/Schoolhouse Road • Cutchogue, NY 11935 • 631.735.9300 • harvest-pointe.com

The complete terms are in an Offering Plan available from Sponsor. File No. CD17-0155. All photos are lifestyle photos or amenities in the area. All clubhouse and residence images are artist's renderings.

