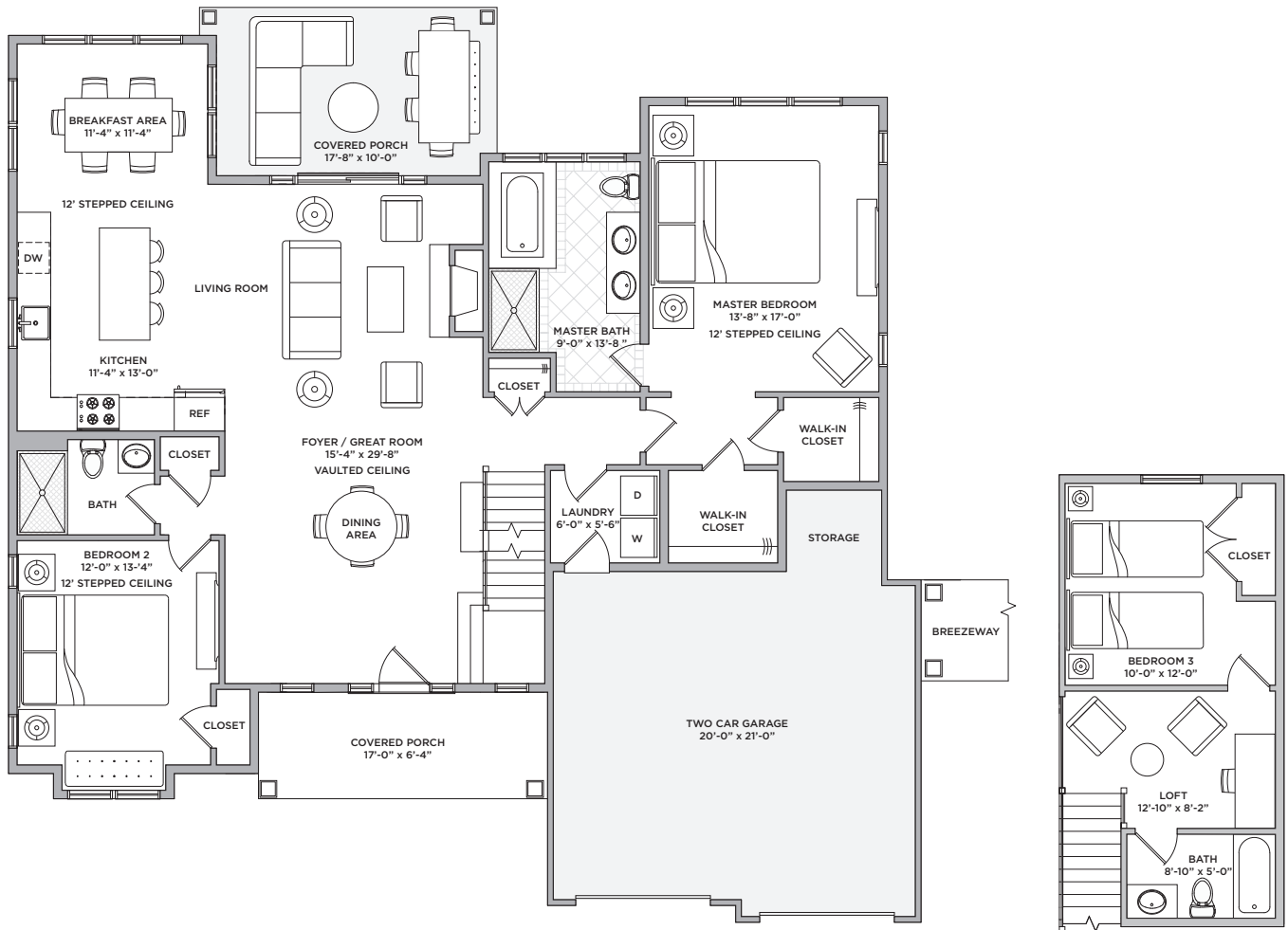


3 BEDROOMS • LOFT • 3 BATHS • 2-CAR GARAGE • FULL BASEMENT

2,000 SQ FEET



2ND FLOOR BEDROOM AND LOFT

YOUR RESIDENCE ALSO INCLUDES:

GARAGE - 441 SF | BASEMENT - 1,670 SF | FRONT PORCH - 108 SF | REAR PORCH - 177 SF

All dimensions are approximate

Griffing Street/Schoolhouse Road • Cutchogue, NY 11935 • 631.735.9300 • harvest-pointe.com

The complete terms are in an Offering Plan available from Sponsor. File No. CD17-0155. All photos are lifestyle photos or amenities in the area. All clubhouse and residence images are artist's renderings.

